

Trainee Showcase



DIGITAL MENTAL HEALTH

Charlotte Pape

BeWell @ CAMH: A co-designed, evidence-informed text messaging service supporting clinician mental health and wellness

Charlotte Pape joined the Digital Mental Health Research Lab under Dr. Gillian Strudwick in May 2023 as a Project Analyst Research Trainee. Charlotte is currently pursuing her Master of Health Informatics (MHI) at the University of Toronto and hopes to continue her involvement in the implementation, adoption, and evaluation of critical digital health tools such as BeWell at CAMH.

BRAIN CIRCUIT MODELLING

Frank Mazza

In-silico EEG biomarkers of cell-specific inhibition in depression

Frank is a PhD candidate in the Hay Brain Circuit lab studying the cellular mechanisms of depression and their links to clinically - relevant brain signals. His work serves to improve depression diagnosis and treatment monitoring.



BRAIN CIRCUIT MODELLING

Alex Guet-McCreight

In-silico testing of new pharmacology for restoring cortical inhibition in depression

Alex is a postdoctoral researcher in Dr. Etay Hay's brain circuits lab. His work involves in-silico testing of new pharmacology (GABA synaptic modulators) for treating depression and linking changes in neuronal and circuit mechanisms to impaired brain function in aging."

COMPUTATIONAL GENOMICS

Dan Kiss

Age-dependent vulnerability of specific interneurons subtypes in schizophrenia

Dan received his M.H.Sc in Medical Genomics from The University of Toronto in 2022, and is currently working with Dr. Shreejoy Tripathy on RNAseq-mediated cell type proportion estimation in psychiatric disorders. He enjoys live music, board games, over-priced coffee, and getting caught in the rain.



Trainee Showcase



COGNITIVE NETWORK MODELLING

Jason Yang

Computational Modelling of Amotivation in Schizophrenia Spectrum Disorders using Virtual Exploration

Jason completed his undergraduate studies at University of Toronto in Neuroscience and Physiology. Currently, he is in his second year of MSc, working with Dr. Andreea Diaconescu on investigating amotivation within schizophrenia through a computational approach. Outside academics, Jason likes to play soccer and dragonboat!

COGNITIVE NETWORK MODELLING

Sophie Rashid

Arbitration between Social and Reward Learning Systems: A Gamefied Learning Task for Psychosis Symptom Predictions

Ana Sophia Rashid-Cocker is an undergraduate neuroscience student at McGill University, working with the Cognemo group to develop gamified cognitive tasks.

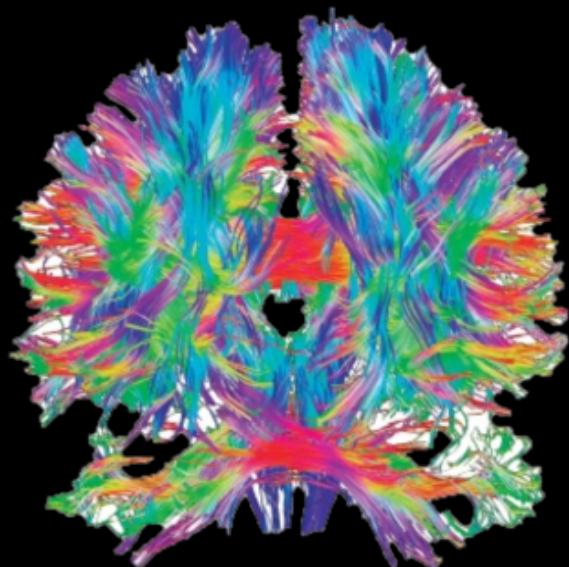


EQUITY, FAIRNESS, & DIVERSITY

Valeria Khudiakova

Building Fair ML models: Investigating the experiences of autistic patients in the CAMH ED

Valeria is a recent graduate from the Psychology Research Specialist program at the University of Toronto and a summer student with T-CAIREM's 2023 AI in Medicine program. She has a keen interest in healthcare accessibility for autistic people and participatory autism research.



EDUCATION

Ju-Chi Yu

Association between brain network stratification and cognition in schizophrenia spectrum disorders (SSD)

Dr. Ju-Chi Yu is a postdoctoral fellow from the Kimel family lab at CAMH working with Dr. Erin Dickie. Her work focuses on developing multivariate statistical techniques and applying them to fMRI brain analysis in order to identify common and specific biomarkers for Schizophrenia and Autism Spectrum Disorders.

