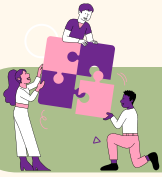


Co-Designing a Fairness Dashboard

Quarterly Updates - Fall 2024



Project Achievements



Celebrated one year of collaboration with our advisors, marking a year of valuable guidance and support!



Facilitated three focus groups to date.

Discover our key findings below and explore more [here](#).



Shared our first Advisor Experience Evaluation survey.

Read advisors' feedback [here](#).

Focus Group Insights

We are conducting focus groups to understand people's perspectives on sociodemographic data collection, use, and visualization. These insights have taught us that co-developing onboarding content and educational materials will be critical for effective dashboard deployment. Key themes identified through analysis include:

COMMUNICATION

"...I initially was kind of concerned cause he [user persona] doesn't have much background in health equity, so just basic things that ran into my mind was like, you know, training, even at the baseline to broaden his own understanding of the importance of health equity."

TRUST

"...There are some communities that are disproportionately impacted that mistrust in the healthcare system, right? So when we talk about AI, just also like I think that one of the end goals is making sure that patient trust isn't compromised."

HOPE

"I'm hoping there are more opportunities for people to speak to their needs and see outcomes."

REPRESENTATION

"I think health equity could benefit from AI if enough voices are able to give information that is relevant to them."

SKEPTICISM

"I'm skeptical about AI because the people who are building it aren't representative of the overall community."

Looking Ahead: Our Next Steps

October - December 2024

Conduct 6-8 additional targeted focus groups

Co-develop advisory video for dashboard users

Develop the Fairness Dashboard in Tableau

For any feedback or questions, please feel free to reach out to:

Laura Sikstrom

Project/Qualitative Lead
Laura.Sikstrom@camh.ca

Marta Maslej

Project/Quantitative Lead
Marta.Maslej@camh.ca

Patrycja Szkudlarek

Research Analyst
Patrycja.Szkudlarek@camh.ca

Iman Kassam

Program Officer
Iman.Kassam@camh.ca