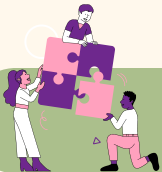


Co-Designing a Fairness Dashboard

Quarterly Updates - Summer 2024



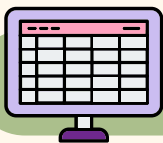
Project Achievements



Welcomed new team member, Iman Kassam, to support dashboard development. [Meet her below!](#)



Extended advisor collaboration through 2024 for project support.



Created our first Fairness Dashboard mockup. [View it here!](#)

Meet Iman Kassam!



Iman, a Program Officer at KCNI, is joining us to support the development of the Fairness Dashboard. She has already begun engaging with advisors and has significantly contributed to the dashboard mockup. Iman will also play a key role in the upcoming focus groups and future engagement efforts. Welcome to the team, Iman!

Connecting with Dashboard Users

Our advisory team is creating a video to narrating patients' hopes and concerns about use of sociodemographic data in research. Using personas, we developed messages for future dashboard users:

Take time to explore the dashboard fully.

Share information responsibly to protect vulnerable communities.

Ask questions if you need help understanding the data.

Thank you for supporting research that deeply matters to me.

Use the tools provided to ensure a thorough and fair analysis.

Looking Ahead: Our Next Steps

July- September 2024

Begin focus group recruitment

Continue engagement with Shkaabe Makwa

Develop the Fairness Dashboard in Tableau

For any feedback or questions, please feel free to reach out to:

Laura Sikstrom
Project/Qualitative Lead
Laura.Sikstrom@camh.ca

Marta Maslej
Project/Quantitative Lead
Marta.Maslej@camh.ca

Patrycja Szkudlarek
Research Analyst
Patrycja.Szkudlarek@camh.ca

Iman Kassam
Program Officer
Iman.Kassam@camh.ca